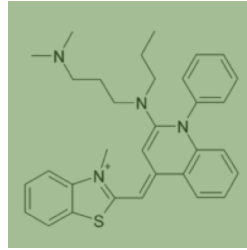


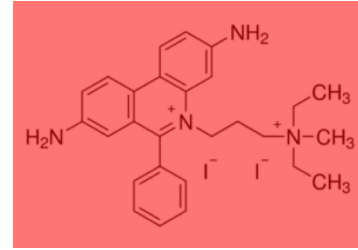
## Approach

flow cytometry,  
following the ISO  
19344 IDF 232. 2015.

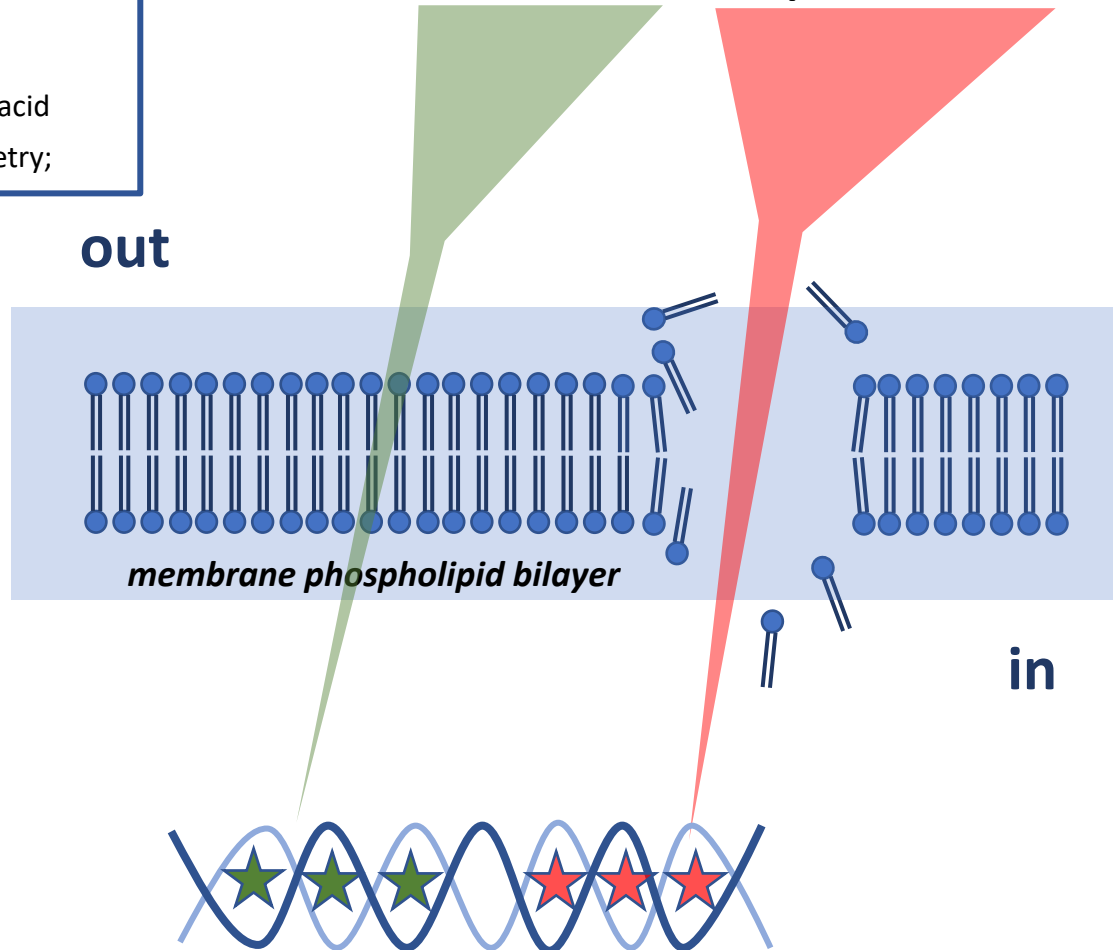
Milk and milk products. Starter  
cultures, probiotics and  
fermented products;  
Quantification of lactic acid  
bacteria by flow cytometry;



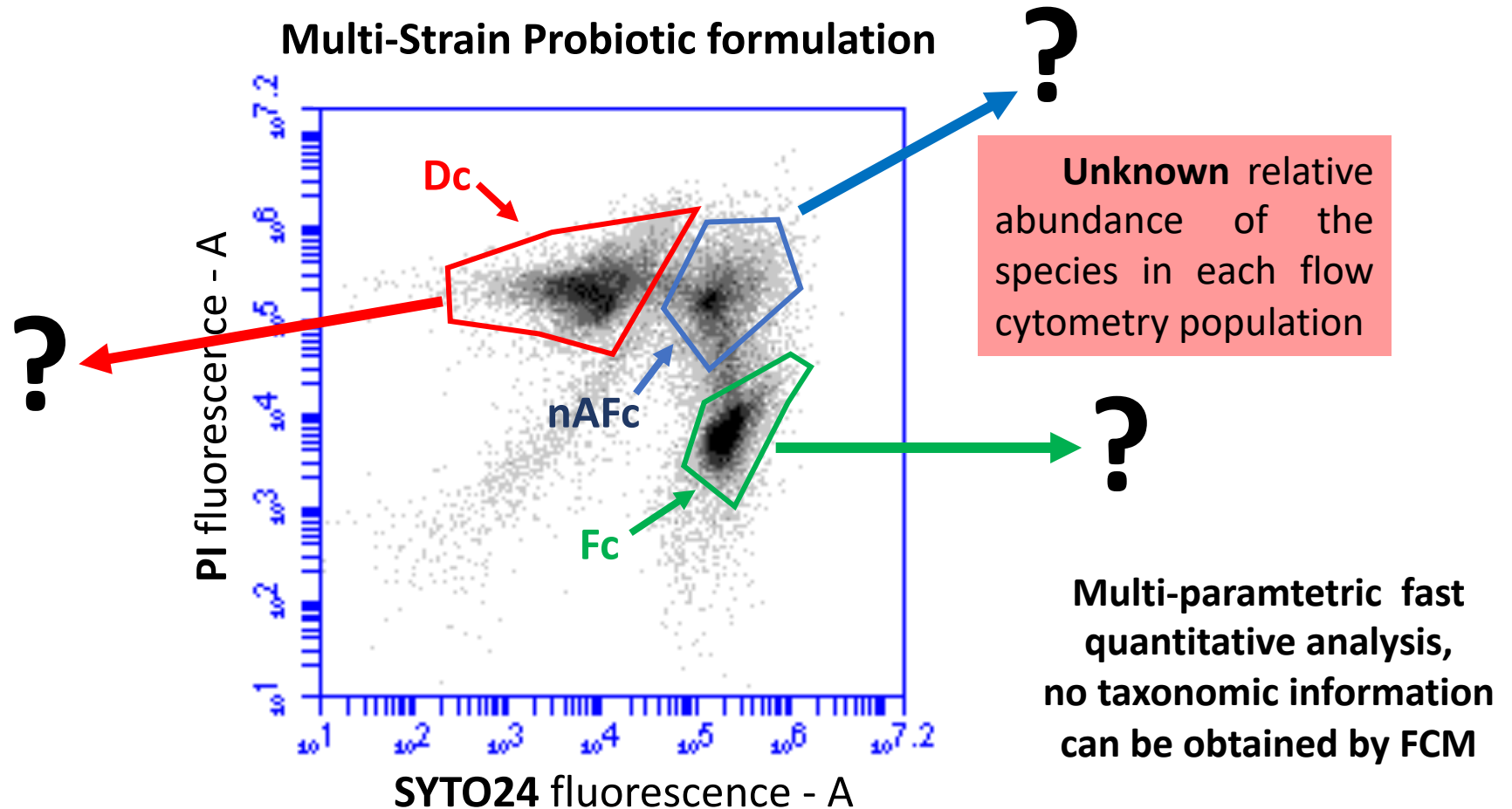
**SYTO24**



**Propidium Iodide**



## Live and dead cell count in a Multi-Strain Probiotic formulation

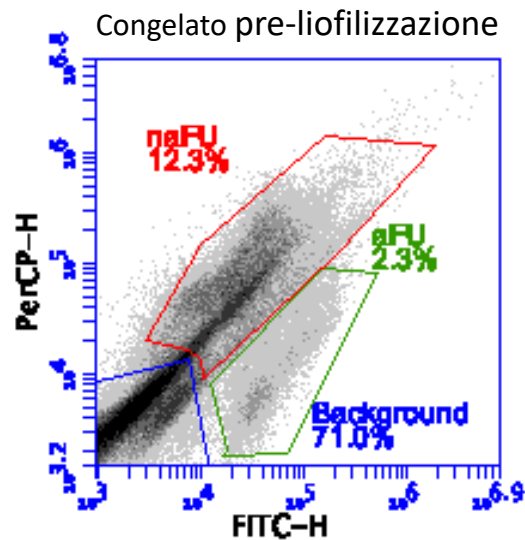


Flow cytometry data should be interpreted as follow:

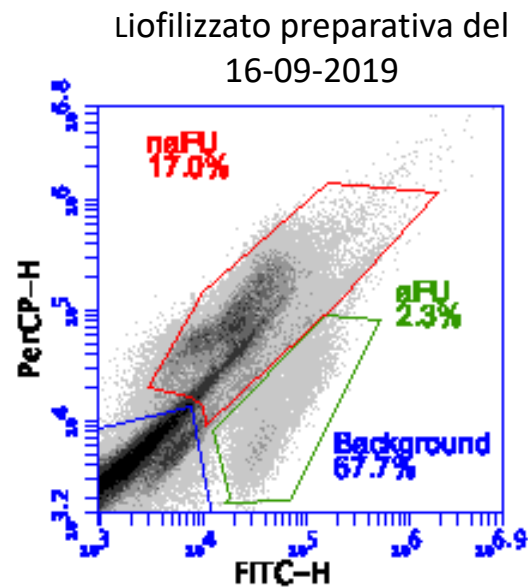
**Fc** (active fluorescent units) should be considered live cells, *i.e.* able to growth;

**Dc** (damaged cells) should be considered injured cells not dead and potentially able to growth;

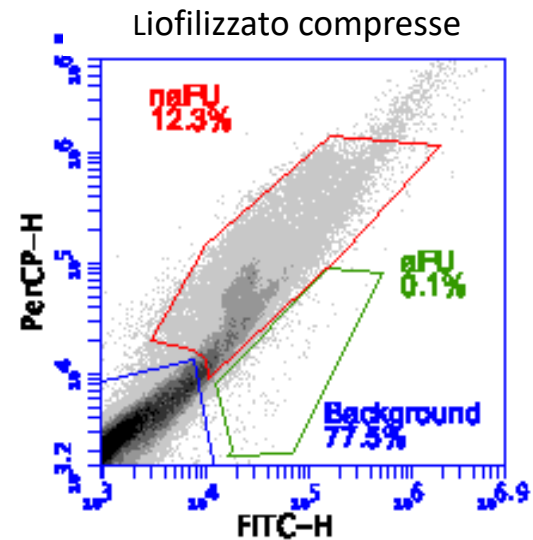
**nAFc** (non-active fluorescent cell) should be considered dead cells.



aFU/ml ( $1.9 \times 10^9$ )  
 naFU/ml ( $8.4 \times 10^9$ )



aFU/g ( $1.4 \times 10^9$ )  
 naFU/g ( $1.1 \times 10^{10}$ )



aFU/g ( $5.5 \times 10^7$ )  
 naFU/g ( $6.5 \times 10^9$ )